



VOYAGES

# THE BEST WAY TO EXPERIENCE THE BEST OF NORWAY

*Award-winning  
ships powered by  
natural gas and  
batteries*



## **TWELVE DAYS** **COUNTLESS MEMORIES**

Learn about the regions we sail through and the largest ports of call.

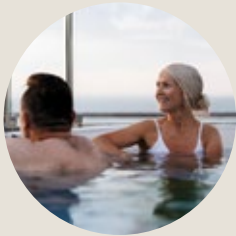
PAGE 4



## **HAVILA FOOD STORIES** **THE FLAVOURS OF NORWAY**

Havila Voyages' dining concept is unique. Learn why.

PAGE 8



## **LIFE ON BOARD**

As your home during the trip, the ship not only provides ample opportunities for relaxation but also serves as your base for leisure on land.

PAGE 11



## **SPACIOUS CABINS**

Travel in comfort, relax, and sleep soundly in our spacious cabins.

PAGE 16



## **BIG IMPRESSIONS WITH** **A SMALLER CARBON FOOTPRINT**

Enjoy Norway's natural heritage – and protect it for generations to come.

PAGE 23



## **WILD EXCURSIONS** **QUIET TRAVEL**

Experience the country's vibrant nature, culture, food and history.

PAGE 26



# WELCOME ABOARD

## THE NEW NORWEGIAN COASTAL SHIPS

Now you can experience the traditional coastal route – and the best of Norway – in brand new, award-winning ships powered by liquid natural gas (LNG) and battery.

Feel the power of nature; the majestic mountains, the vivid water, the stunning Northern lights dancing across the night sky, all while enjoying the modern comfort of a Havila Voyages coastal ship.

We know Norway: its people, its magnificent coastline, and its traditions. With a deep respect for the environment, we use new ships powered by natural gas and battery. In fact, some of the world's largest battery packs ever installed on passenger ships are aboard ours. This commitment is one of the many reasons we offer coastal voyages with a reduced carbon footprint.

Just as we prioritize the sustainability of our ships, we equally value the personal service and hospitality our guests meet on board. Our unique food- and dining concept features menus and ingredients inspired by Norwegian culinary traditions, adapting as we navigate through diverse landscapes.

Our ships are designed to make the most out of travelling along Norway's breathtaking coastline. That means large, spacious

cabins, floor-to-ceiling panoramic windows, and a glass roof, through which you may marvel at the Northern Lights or the midnight sun.

Most importantly, we are here for you. After all, you are the one we want to please. We sincerely care about your wellbeing, and we want you to have everything you need to get an eventful, educational, and rewarding journey. Our employees are our greatest resources, and they will meet you with friendly smiles and a high degree of knowledge, doing everything in their power to see you well through your voyage.

It's a holiday designed to ensure that you experience the best of Norway in the best way.

Eat better, sleep better, live better – and create memories for life.

Welcome aboard!

# NORTHBOUND COASTAL VOYAGE

Whether you're going on the entire round trip or enjoying just part of it, new adventures await you every day.



*Magical Norwegian fjords*

## DAY 1

### PORT: BERGEN

The voyage starts in Bergen, the colorful capital of western Norway, where you can explore the UNESCO-listed Bryggen warehouses, ride the Fløibanen funicular for scenic views, indulge in fresh seafood at the fish market or wander the lively harbor's charming streets and quays. Bergen is the gateway to the Norwegian fjords and the start of your coastal adventure.



## DAY 2

### PORTS: FLORØ-MÅLØY-TORVIK-ÅLESUND-GEIRANGER\*/ HJØRUNDFJORDEN\*-ÅLESUND-MOLDE

On the morning of the second day, you can greet the Havila Voyages headquarters near Torvik before arriving in Ålesund, known for its art nouveau architecture. During the summer months, you have the option to continue on to the stunning Geiranger Fjord, designated as a UNESCO World Heritage Site, to witness its dramatic waterfalls and steep mountain landscapes. During the autumn we visit the less known, but just as beautiful Hjørundfjord.

## DAY 3

### PORTS: KRISTIANSUND-TRONDHEIM-RØRVIK

It is morning when we dock in the historic city of Trondheim, which was founded over a thousand years ago. The Nidaros Cathedral is the city's major landmark. Furthermore, it is Norway's national shrine and one of the largest cathedrals in northern Europe. After our visit here, the voyage continues towards northern Norway.

**DAY 4**

**PORTS: BRØNNØYSUND-SANDNESSJØEN-NESNA-ØRNES-BODØ-STAMSUND-SVOLVÆR**

As we journey further north, we'll celebrate crossing the Arctic Circle with a fun ceremony before exploring the Arctic regions. Witness the midnight sun during the summer months or see the Northern Lights illuminate the winter sky. See the world's strongest tidal current, and spot the majestic sea eagles. In the evenings, you can explore the Lofoten fishing villages, admire the steep mountains, and learn about Viking history and heritage.

**DAY 5**

**PORTS: STOKMARKNES-SORTLAND-RISØYHAMN-HARSTAD-FINNSNES- TROMSØ-SKJERVØY**

As we continue through the narrow fjords and wild mountains, we'll arrive in Tromsø, a city with a rich history associated with hunting, fishing, and polar expeditions. Tromsø is also a gateway to the land of the Sami, Norway's indigenous people. Meeting the Sami and learning about their culture, including their unique connection with reindeer, is a truly unforgettable experience.

**DAY 6**

**PORTS: HAMMERFEST-HAVØYSUND-HONNINGSVÅG-KJØLLEFJORD-MEHAMN-BERLEVÅG**

This is as far north as you can get — by land and sea. For many, the visit to the North Cape is a highlight and a goal for voyages along the Norwegian coast. Up here, in the polar landscape, nature is at its harshest and most desolate, but between bare plains and rugged cliffs, people cling on and reap nature's bounty — and you can have a taste of the catch. How about some king crab?

**DAY 7**

**PORTS: BÅTSFJORD-VARDO-VADSØ - KIRKENES**

Congratulations, you have now reached the easternmost point of your voyage! The border with Russia is only a few kilometers away, and you may notice that road signs in Kirkenes are written in both Norwegian and Russian. Consider joining one of our excursions to visit the border, or venture to the Snowhotel where everything is crafted from ice and snow for a unique and memorable experience.



# SOUTHBOUND COASTAL VOYAGE

## DAY 8

**PORTS: MEHAMN-KJØLLEFJORD-HONNINGSVÅG-HAVØYSUND-HAMMERFEST-ØKSFJORD-SKJERVØY-TROMSØ**

As we sail west and south, the polar landscape transforms, giving way to towering peaks. In the evening, we'll arrive in Tromsø where you can attend a midnight concert in the Tromsø cathedral or take a stroll in the stunning midnight sun or under the mesmerizing Northern Lights. Explore the city's lively nightlife scene, known as "The Paris of the North".

## DAY 9

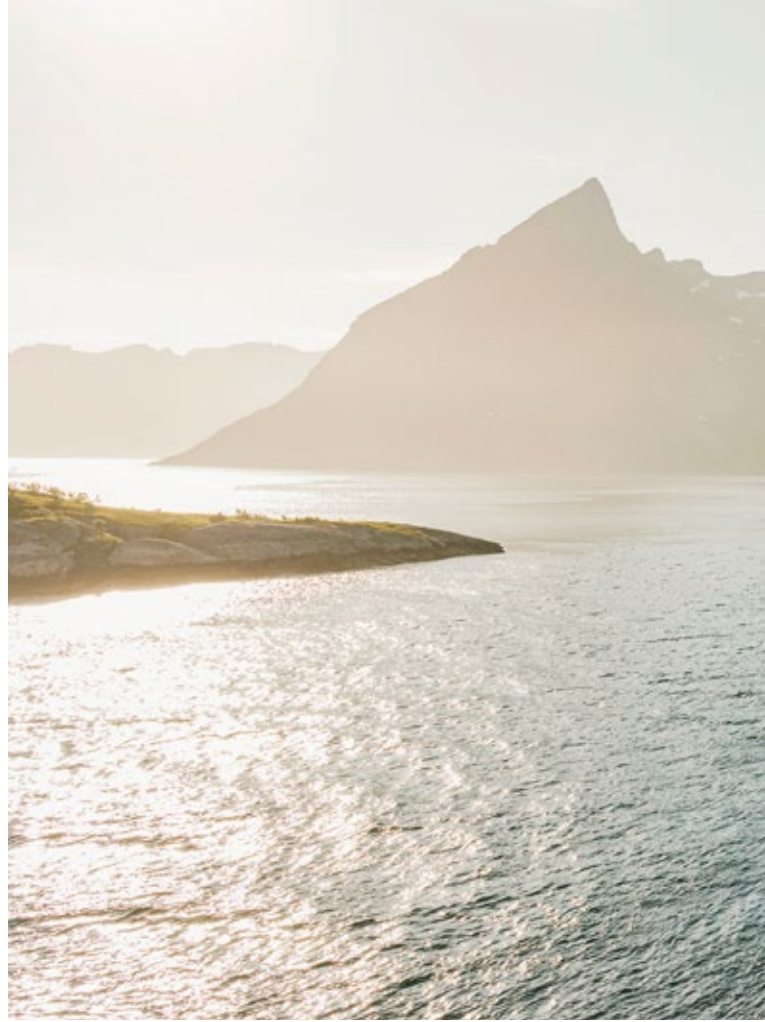
**PORTS: FINNSNES-HARSTAD-RISØYHAMN-SORTLAND-STOKMARKNES-SVOLVÆR-STAMSUND**

Next, we'll return to the stunning and picturesque Lofoten Islands, where you'll find a mix of wild and idyllic scenery. Along the coastline, you'll discover chalky, white, and sandy beaches alongside charming fishing villages, which still thrive on a vibrant fishing industry. The locals rely on coastal ships for everyday transportation. Weather permitting, we'll venture into the narrow Trollfjord, which offers an excellent chance to spot majestic sea eagles.

## DAY 10

**PORTS: BODØ-ØRNES-SANDNESSJØEN-BRØNNØYSUND-RØRVIK**

At this juncture of our journey, we have ventured so far south that we have left the polar land behind and crossed the Arctic Circle. However, during winter, you may still witness the Northern Lights illuminating the night sky, while summer brings the magical midnight sun. As we sail, we'll pass by numerous small islands, islets, and mountains, including the unique Torghatten mountain, which features a hole in its center. If you're up for it, consider joining us for a hike on the mountain and explore the cavern.





**DAY 11**

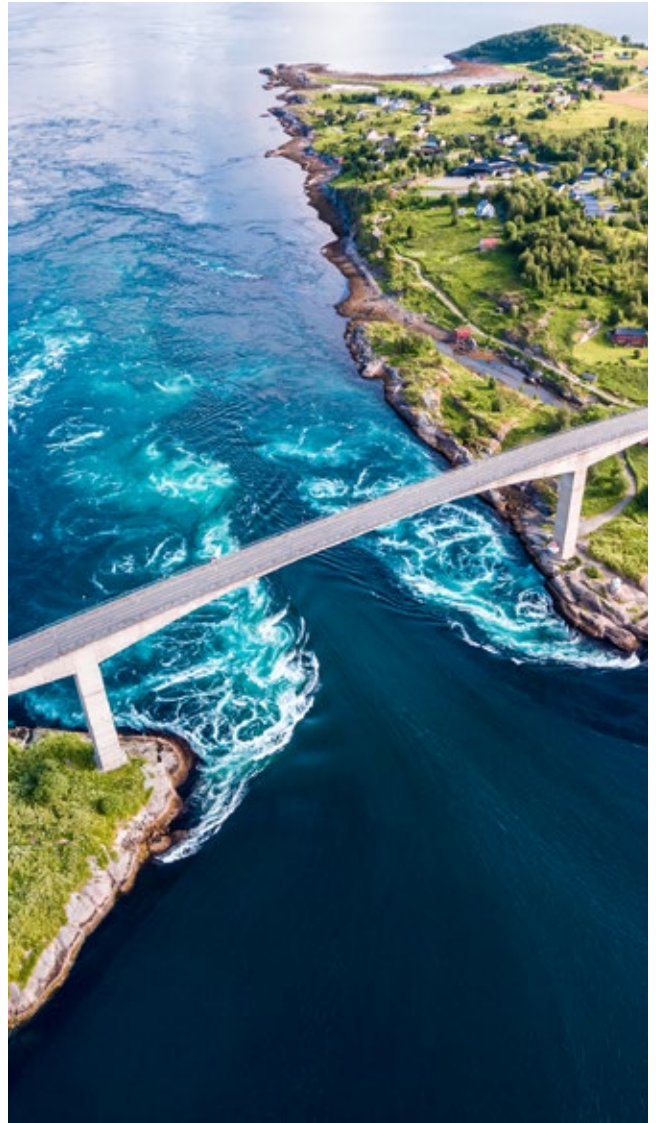
**PORTS: TRONDHEIM-KRISTIANSUND-MOLDE-ÅLESUND**

We'll sail through the vast Trondheim fjord, flanked by rolling farmland on either side, before reaching the coast and the open sea once more. If you wish to disembark, Kristiansund offers the opportunity for a scenic bus tour along the Atlantic Ocean Road, considered one of the world's most beautiful drives. The road winds along islets and reefs, and after the tour, you can rejoin us in Molde.

**DAY 12**

**PORTS: TORVIK-MÅLØY-FLORØ-BERGEN**

On the final day of your journey, we'll take you through a varied coastal landscape that features rugged rocky mountains and an intricate network of straits and waterways between countless islands. The magnificent fjords and glaciers are located further inland. Our voyage concludes in Bergen, but you have the opportunity to join us for one last adventure – a captivating excursion through the city's history, flavors, and breathtaking views. We hope these new memories will be cherished, and we eagerly await the chance to welcome you back on board in the future.



# HAVILA FOOD STORIES

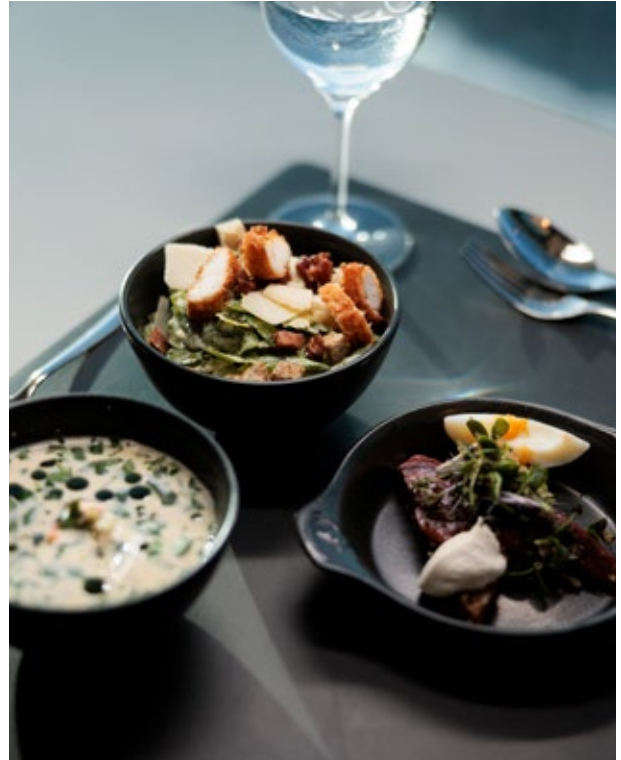
## THE FLAVOURES OF NORWAY

Savour top Norwegian ingredients and as the coast changes, so does the menu.

To ensure our guests the very best, we have developed a unique food concept that offers flavours reflecting the gastronomic cultures along the Norwegian coast – prepared with the best food ingredients our country has to offer.

Our approach is a respectful tribute to our regional culinary traditions, ensuring that the delicious flavours will remain in your memory long after your journey is over.

On board Havila Voyages, the menu is determined by the regions we sail through. During the round trip – from Bergen to Kirkenes and back again – the ship sails through four different "food universes", each of which has its own flavours. The menus – for breakfast, lunch, and dinner – are changed every third day, so that you can get to know the different cuisines. This doesn't mean that there is only a small selection. On the contrary, you can try something new from the menu every single day. There are also some fixed dishes on it, so you can pick your favourites throughout the trip.



### FLAVOURES OF THE FJORDS

On the Bergen-Trondheim route, we source our ingredients from the sun-drenched mountainsides lining the fjords and from the depths of the sea. The flavours of apples and cherries intensify during the bright summer nights, and our good friends along the coast deliver fresh treats from the sea.

### FLAVOURES OF THE POLAR REGION

Between Bodø and Honningsvåg, we sail through the Lofoten Islands. Therefore the menu includes Lofoten cod, Norwegian cod roe, dried fish, and cloudberry. If you fancy some meat, then why not try our free-range pork from the world heritage site of Vega?



### HAVRAND RESTAURANT

Welcome to our main dining room; open, elegant, warm, and relaxed. Breakfast, lunch, and dinner are served here.

The à la carte menus in our main restaurant, Havrand, gives you as much freedom of choice as any buffet. You simply order the dishes you want at your table. That way, you avoid queuing, you get personal service, and you (and we) avoid large amounts of food waste which is good for the environment. In fact, we have set ourselves an ambitious goal of reducing food waste to incredible 75 grams on average per guest per day. We reached that goal in 2022, averaging 71 grams of food waste per guest daily.



### HILDRING FINE DINING

This exclusive, intimate restaurant provides a luxurious, classic, and elegant environment for your meals. The dinner consists of our five-course signature menu composed of the best ingredients Norway has to offer.



### HAVLY CAFÉ

Havly means “shelter from the sea” and back in the day, this was a sanctuary for thousands of fishermen and sailors on the Norwegian coast, providing them with food, warmth, and safety.

In harbor after harbor, you could find small cafes and guest houses carrying the name Havly, like a second home for fishermen working on tiny boats along the weathered coast. At Havly at Havila Voyages, we stick to those traditions – with good, unadulterated, and satisfying food.

From our onboard bakery, you can have your choice of baked goods such as buns and cinnamon rolls. Or what about our own Havly bun with chocolate and vanilla cream?

In the café, you get Norwegian favourites such as waffles and creamed cake, prawn sandwiches, and meatloaf sandwiches. However, you will also find pizzas and hamburgers on the menu, as they have become traditional foods, along with a creamy coastal classic; fish soup with salmon, cod, and prawns.



### FLAVOURES OF THE ARCTIC

The voyage from Kirkenes to Svolvær takes you through the harsh, Arctic northern area. Here, long-legged king crabs crawl about in the cold dark depths of the ocean, and on land, herds of reindeer graze in the tundra. Naturally, crab and reindeer feature on the menu during this part of the voyage as well as cured leg of lamb, Arctic char, and seaweed.

### FLAVOURES OF THE ARCHIPELAGO

From Rørvik and south towards Bergen, the voyage runs through an archipelago where the rich waters have always provided both food and livelihoods. You can try klipfish and herring, both of which have been valuable exports from Norway for centuries, and local treats such as halibut and brown crab.



# BEVERAGE PACKAGES

Beverage packages give you better value.

## NON-ALCOHOLIC BEVERAGE PACKAGE

Enjoy your voyage with our non-alcoholic beverage package. It's available in various sizes, allowing you to choose from a wide selection of mineral waters, soft drinks, premium coffees like Café Latte, Cappuccino, and Espresso, non-alcoholic cocktails, and non-alcoholic beers and wines. You can use the package at all serving points onboard.

## REGULAR BEVERAGE PACKAGE

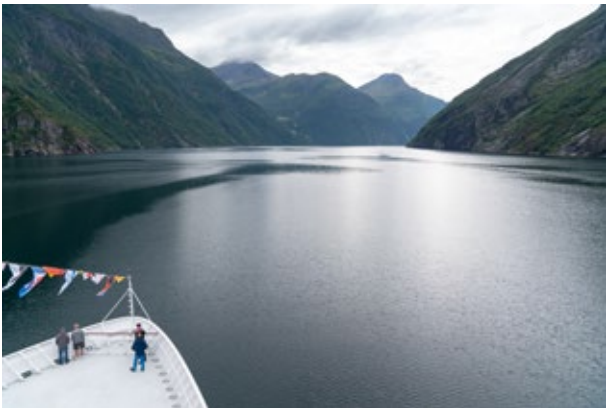
This package gets handy both in our two restaurants; Havrand and Hildring Fine Dining, and in the Havblikk Bar & Lounge. For some basic drinks, such as beer and wine, you can even use it in the Havly Café. You can use the units for beer, wine, a variety of cocktails, and other alcoholic drinks.





## LIFE ON BOARD

The ship is your home during your stay with us. It offers a haven for rest and relaxation and provides your base for activities and experiences on land.



### ENJOY THE VIEWS AND FRESH AIR

Enjoy breath-taking views and fresh air from our promenade deck, viewing deck, and observation lounge.

If you crave a breeze and open air, an outdoor deck and viewpoint on the bow, as well as a promenade on deck eight, await you.

At the ship's highest point, deck nine, you'll find Havblikk Bar & Lounge. Here, you can unwind in comfortable lounge chairs under a glass roof, offering clear views of the Northern Lights, starry nights, or the unique glow of the midnight sun.



### JACUZZI

Enjoy a warm bubble bath on the aft deck while taking in views of the mountains and fjord. This excellent spot on the ship's promenade on deck eight offers a relaxing activity to enjoy throughout the year.

### SAUNA

Two lovely saunas are located on deck eight. The men's sauna is on the starboard side, while the women's sauna is on the port side. Both are conveniently situated near the changing facilities and Jacuzzis.



### SHOPPING

Find unique clothing, souvenirs, books, and local specialties in the Havila Shop located on deck six, the heart of the ship.

In the Havila Shop, you'll find all the essentials for your journey - from toiletries and select pharmacy items - to practical clothing for your excursions. We stock renowned clothing brands such as Devold, Skogstad, and Dale of Norway. These high-quality clothes are designed specifically for the Norwegian climate. Our shop staff are on hand to help with recommendations and to assist you in finding the right clothing sizes.

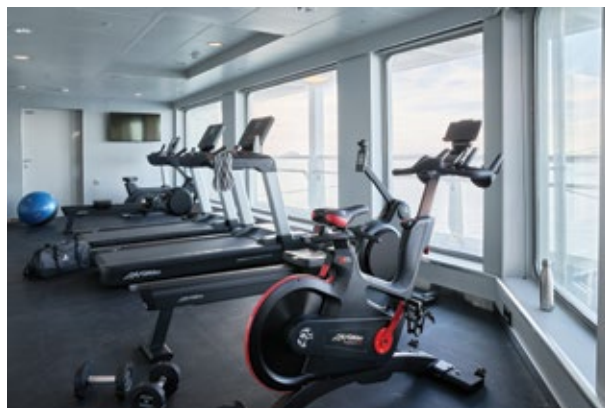
The shop also provides a range of books, jewellery, local specialties, and souvenirs.



### CAFÉ, RESTAURANTS, AND BARS

The ship has two restaurants, a bar with panoramic views, a lobby shop, and a café. An outdoor bar opens whenever suitable.

The menus feature locally sourced food and the finest Norwegian ingredients.



### GYM

Positioned by the window, you can exercise while enjoying the passing scenery.

On deck seven, you'll discover two well-equipped fitness rooms. The starboard side offers treadmills, bikes, and rowing machines, while the port side features a varied selection of strength equipment and dumbbells. Everything is organized for an efficient workout.



### A ROOM WITH RECLINERS

For a short journey where a cabin isn't necessary, a recliner in our Port-to-Port Lounge is an excellent choice.

The recliners can be booked in advance, or you can consult with the reception to reserve one on board.

These comfortable chairs, located on deck four, are ideal for a short break. Although this is a quiet area, the TV in the lounge may be used.



## THE ONBOARD INTERIOR

The ship's interior reflects Norwegian quality and design, with materials and colours mirroring the scenic surroundings of your sailing journey.

The furniture is supplied by well-known Norwegian manufacturers like Brunstad, Fora Form, and Ekornes. The mattresses are from Recticel in Åndalsnes.

Our ships also feature unique works of art by artists such as Ørnulf Opdahl, Cathrine Knudsen, Ingrid Haukelidsæther, and Frank Brunner.

On deck six, you'll find stories about shipowner Per Sævik and Havila's history, along with stories about coastal women, the indigenous coastal people of the North; the Sami, and medicine.

## MEDICAL CARE

Ensuring your safety during your travel is our top priority.

While we sail along the coast and near harbors, we do not have a permanent doctor onboard. However, our staff is trained in first aid and can offer basic medical assistance. Additionally, we have a dedicated safety officer to ensure the well-being of both passengers and crew.

On deck four, you'll find a well-equipped hospital ward with two sick bays. Should severe health issues arise, we maintain a direct connection to the shore through digital assistance, guaranteeing quick access to necessary support. For added safety, three defibrillators are strategically located on various decks.



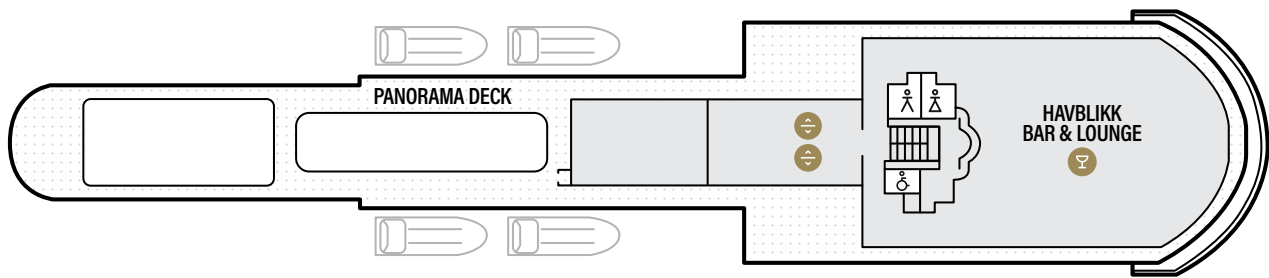
# GETTING TO KNOW THE SHIP

Deck six is the beating heart of the ship, and is home to most of the communal areas. Decks eight and nine are the places for outdoor activities and views while the cabins are located on decks four, five and seven.

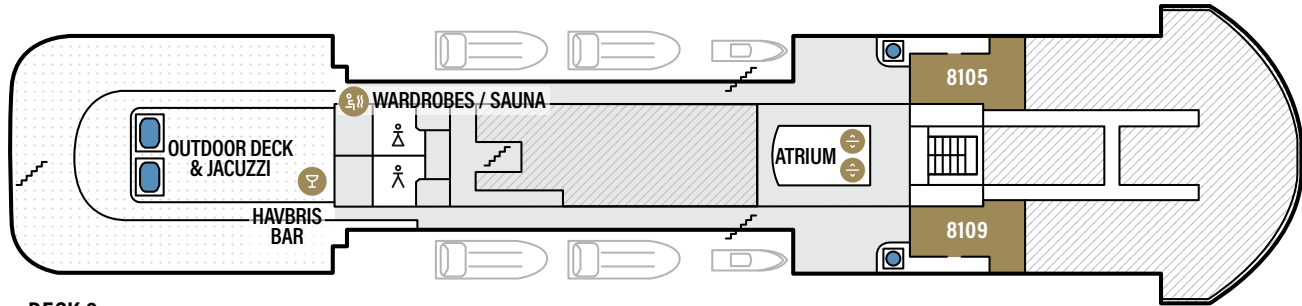
SHIP SPECIFICATIONS	
PASSENGERS: .....	640
CABINS: .....	179 (BEDS: 468)
GROSS TONNAGE: .....	15,776 TONS
SERVICE SPEED: .....	15.5 KNOTS
SHIPYARD: .....	TERSAN TERSANECILIK SAN. TİC. A.Ş.

- EATERIES/COMMUNAL AREAS
- INTERIOR
- INTERIOR ACCESSIBLE
- SEAVIEW SUPERIOR DOUBLE
- SEAVIEW SUPERIOR TWIN
- SEAVIEW DELUXE
- SEAVIEW SUPERIOR ACCESSIBLE
- PANORAMIC SUPERIOR
- PANORAMIC DELUXE
- BALCONY DELUXE
- BALCONY DELUXE ACCESSIBLE
- JUNIOR SUITES
- LIGHTHOUSE SUITES

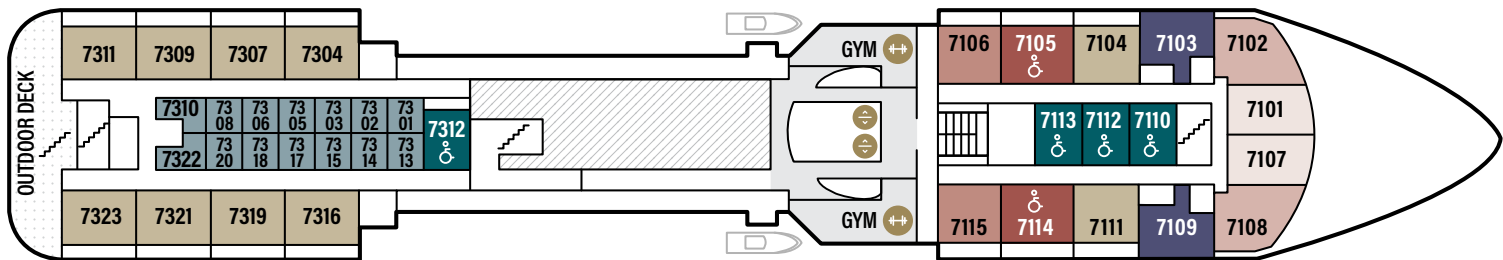




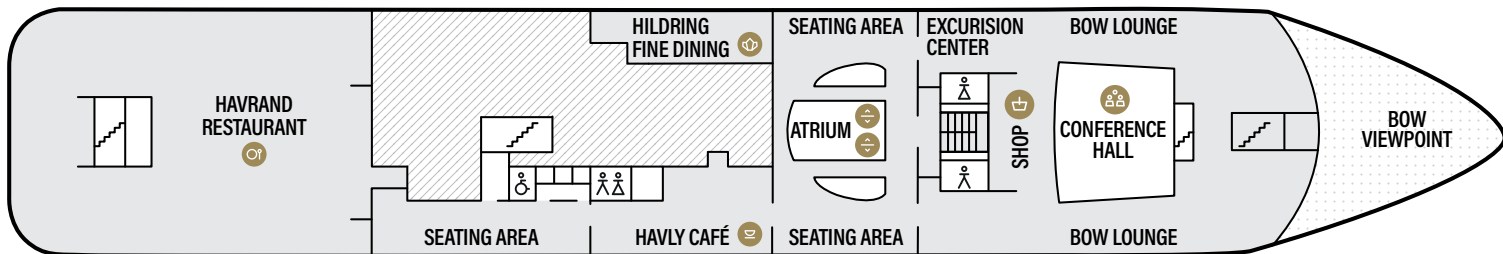
DECK 9



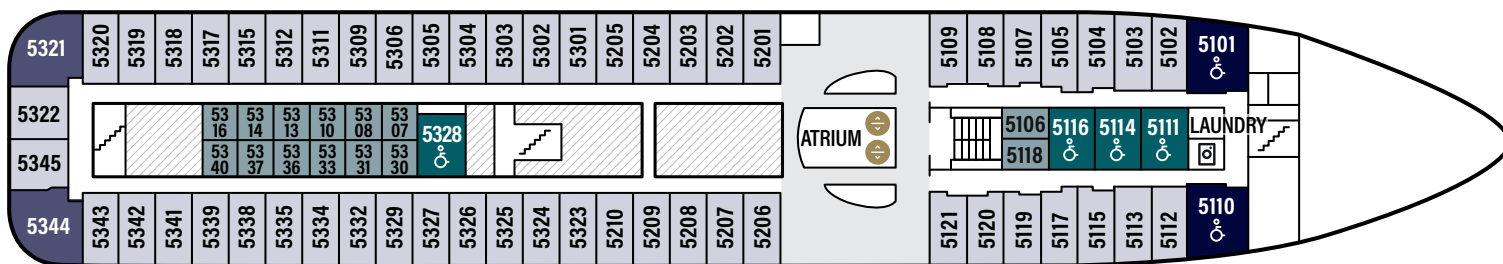
DECK 8



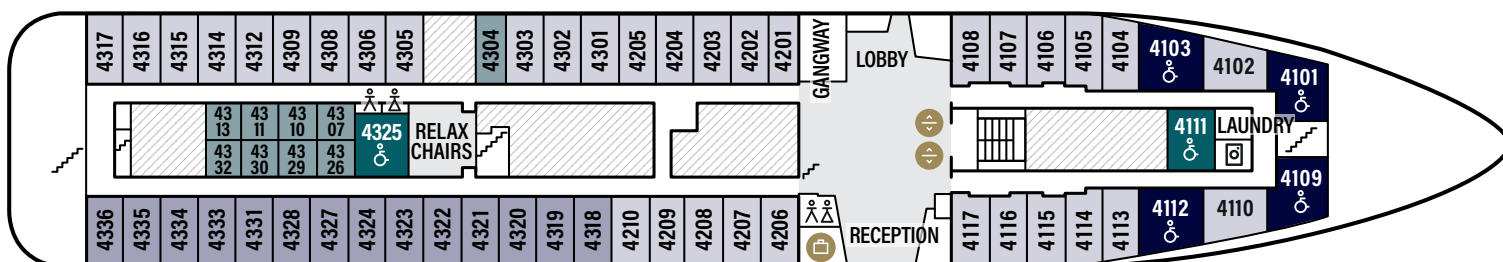
DECK 7



DECK 6



DECK 5



DECK 4

# SEAVIEW CABINS

Our elegant cabins are designed to give you the space you need and the quality you deserve.



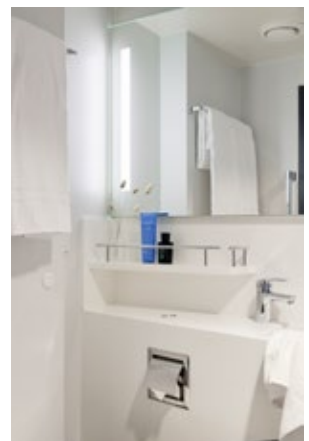
## SEAVIEW SUPERIOR DOUBLE

- ✓ Two to four people
- ✓ 15 m<sup>2</sup>
- ✓ Outside cabin with a sea view
- ✓ Double bed
- ✓ Sofa or a sofa bed
- ✓ Writing desk
- ✓ Fridge
- ✓ Hairdryer
- ✓ Tea and coffee



## SEAVIEW SUPERIOR TWIN

- ✓ Two people
- ✓ 15 m<sup>2</sup>
- ✓ Outside cabin with a sea view
- ✓ Separated single beds
- ✓ Sofa or sofa bed
- ✓ Writing desk
- ✓ Fridge
- ✓ Hairdryer
- ✓ Tea and coffee

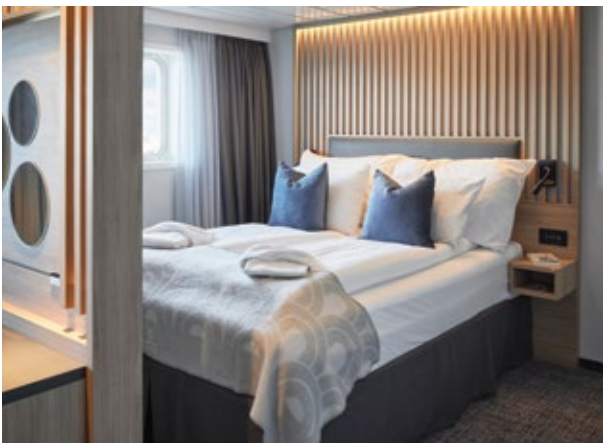






**SEAVIEW DELUXE**

- ✓ Up to four people
- ✓ 30 m<sup>2</sup>
- ✓ Outside cabin with large rear-facing windows
- ✓ Double bed
- ✓ Sofa or a sofa bed
- ✓ Coffee table
- ✓ Desk w/chair
- ✓ Refrigerated drawer
- ✓ Hairdryer
- ✓ Coffee



**SEAVIEW SUPERIOR ACCESSIBLE**

- ✓ Two people
- ✓ 20 m<sup>2</sup>
- ✓ Outside cabin with a sea view
- ✓ Double bed
- ✓ Sofa
- ✓ Writing desk
- ✓ Fridge
- ✓ Hairdryer
- ✓ Tea and coffee



# PANORAMIC AND DELUXE CABINS

In the Panoramic and Balcony Deluxe cabins, extra emphasis is placed on the quality and comfort of the interior and furnishings.

## PANORAMIC SUPERIOR

- ✓ Two people
- ✓ 30 m<sup>2</sup>
- ✓ Outside cabin at the bow
- ✓ Floor-to-ceiling window
- ✓ Double bed
- ✓ Seating area with a table
- ✓ Desk with a chair
- ✓ Refrigerated drawer
- ✓ Hairdryer
- ✓ Tea and coffee



## PANORAMIC DELUXE

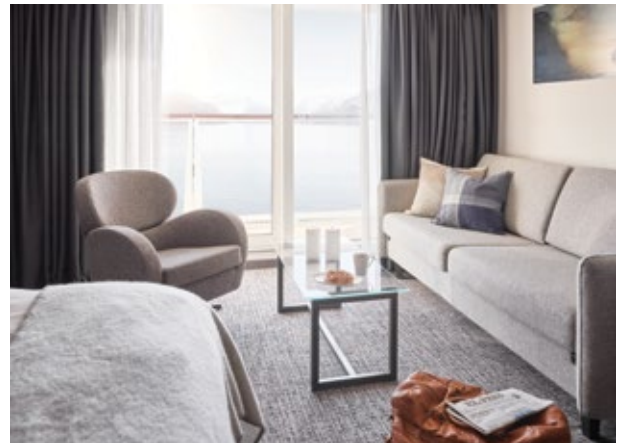
- ✓ Two people
- ✓ Approx 21,5 m<sup>2</sup>
- ✓ Outside cabin at the bow
- ✓ Floor-to-ceiling window
- ✓ Double bed
- ✓ Seating area with a table
- ✓ Desk with a chair
- ✓ Refrigerated drawer
- ✓ Hairdryer
- ✓ Tea and coffee





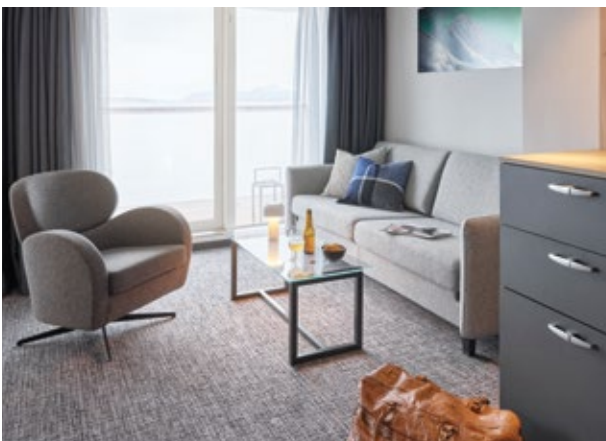
### BALCONY DELUXE

- ✓ Up to four people
- ✓ 30 m<sup>2</sup>
- ✓ Outside cabin
- ✓ Double bed
- ✓ Sofa or sofa bed
- ✓ Coffee table
- ✓ Desk w/chair
- ✓ Refrigerated drawer
- ✓ Hairdryer
- ✓ Coffee



### BALCONY DELUXE ACCESSIBLE

- ✓ Up to four people
- ✓ Approx 21,5 m<sup>2</sup>
- ✓ Outside cabin
- ✓ Double bed
- ✓ Sofa or sofa bed
- ✓ Coffee table
- ✓ Desk w/chair
- ✓ Refrigerated drawer
- ✓ Hairdryer
- ✓ Coffee



# JUNIOR SUITES WITH A BALCONY

How about the benefits of your very own private balcony? A place to enjoy a cup of coffee and a good book in peace and quiet, as the sea air caresses your skin.



In the junior suite, there's a stylish divider with a TV that can rotate either towards the seating area or the bed, giving you flexibility in your viewing choice. However, the breathtaking views from the balcony or the wide windows might be even more tempting.

The cabin comes with a welcome kit, a bathrobe, slippers, a hairdryer, and a coffee maker.

## JUNIOR SUITE

- ✓ Up to four people
- ✓ 22-25 m<sup>2</sup>
- ✓ Private balcony (6-9 m<sup>2</sup>)
- ✓ Floor-to-ceiling windows
- ✓ Double bed
- ✓ TV
- ✓ Seating area with a table
- ✓ Desk with a chair
- ✓ Two wardrobes
- ✓ Fridge
- ✓ Hairdryer
- ✓ Coffee machine
- ✓ Bathrobe and slippers



# INTERIOR CABINS

An interior cabin is a good and affordable option with upper and lower beds.

Interior Accessible cabins, equipped with two or four beds, are designed to be more spacious, accommodating wheelchairs and featuring larger bathrooms.

## INTERIOR

- ✓ Two people
- ✓ 10 m<sup>2</sup>
- ✓ Inside cabin without a window
- ✓ One standard bunk bed
- ✓ Sofa
- ✓ TV
- ✓ Hairdryer
- ✓ Tea and coffee



## INTERIOR ACCESSIBLE

- ✓ Two to four people
- ✓ 16-18 m<sup>2</sup>
- ✓ Inside cabin without a window
- ✓ Two standard bunk beds
- ✓ TV
- ✓ Hairdryer
- ✓ Tea and coffee





# LIGHTHOUSE SUITES

The Lighthouse Suites feature our most exclusive accommodation. The attention to detail guarantees the finest levels of comfort: superior quality bed linen, better and wider beds, and the furniture is in a class of its own. The living room incorporates a seating area and dining room furniture, as well as a large sofa in front of the TV.

Each ship has only two of these 45 m<sup>2</sup> suites. Designed in an exclusive Nordic style, they offer warm elegance and generous space. Each suite has a separate bedroom and a bathroom with both a bath and a shower. Naturally, they include bathrobes and slippers. The complimentary minibar is refilled daily.

When you board, a welcome package awaits you. You'll receive personal attention, additional services, and special offers during your voyage. Lighthouse Suite guests have the option to enjoy a breakfast buffet in the main restaurant or have breakfast in Hildring, our fine-dining restaurant. This dining choice also extends to dinner.

Your spacious private balcony features a Jacuzzi. Relax there and take in the starry skies, Northern Lights, or the midnight sun.





# **BIG IMPRESSIONS** **WITH A SMALLER CARBON FOOTPRINT**

"We navigate through a World Heritage site, and we hope that future generations will do the same," said Per Sævik, the founder of Havila Voyages. This is why we hold such deep respect for our surrounding nature and environment.

Pure water – Fresh air – Unspoiled scenery – Silence... In the Norwegian fjords you can find it all, and there is nothing we desire more than letting it stay that way forever. That's why Havila Voyages is so concerned with focusing on sustainability in everything we do – from the way our four coastal cruise ships are built, to the way we run our business.

We believe that coastal voyages can play a role in protecting our planet and its biodiversity, simply because they connect us with nature and people on a whole new level. We sincerely want our guests to connect with the environments that we sail through, and to make sure that our voyages represent everything we stand for: Lead (the way), share (our knowledge), and care (about our guests, our employees, and our surroundings). →



## **WE LIVE OFF THE OCEAN**

It is exceedingly important that we keep in mind what the ocean does for us. The ocean covers more than 70 percent of our planet, and we depend on it to maintain life, to create jobs, and to connect with the world. At the same time, we cannot have a regulated climate without the ocean. Did you know that it currently absorbs between 30 and 50 per cent of the CO<sup>2</sup> released in the atmosphere? The ocean is our planet's heart and lungs, and we want to do our part in taking care of it.

## **LNG AND BATTERY POWER**

Havila Voyages' four coastal cruise ships are loaded with some of the largest battery packs ever installed on a passenger ship, meaning that we can sail for up to four hours straight with zero emissions. That way you can visit vulnerable fjords, such as the world heritage Geirangerfjord, without worrying about environmental issues, and you can do so in utter silence. The battery packs, which are supplied by Corvus, weigh 86 tons, and they have a capacity of 6.1 megawatt hours.

The batteries are charged with clean hydropower ashore, and when we don't use the batteries, we run on LNG (liquid natural gas) which – along with general efficient hybrid operation – cuts CO<sub>2</sub> by around 35 per cent. NO<sub>x</sub> emissions are reduced by 90 per cent.

Furthermore, Havila Voyages intends to become both carbon-neutral and achieve zero emissions in the future.

We're beginning by gradually transitioning from natural gas to biogas, aiming to be carbon-neutral by 2028. Subsequently, we'll adopt emission-free fuels like hydrogen, targeting zero emissions by 2030 with our current fleet.

## **ENERGY-EFFICIENT HULL DESIGN**

The hull on all Havila Voyages' ships is specially designed to sail as energy-efficiently as possible, and it is built to withstand local weather conditions on the Norwegian coast.

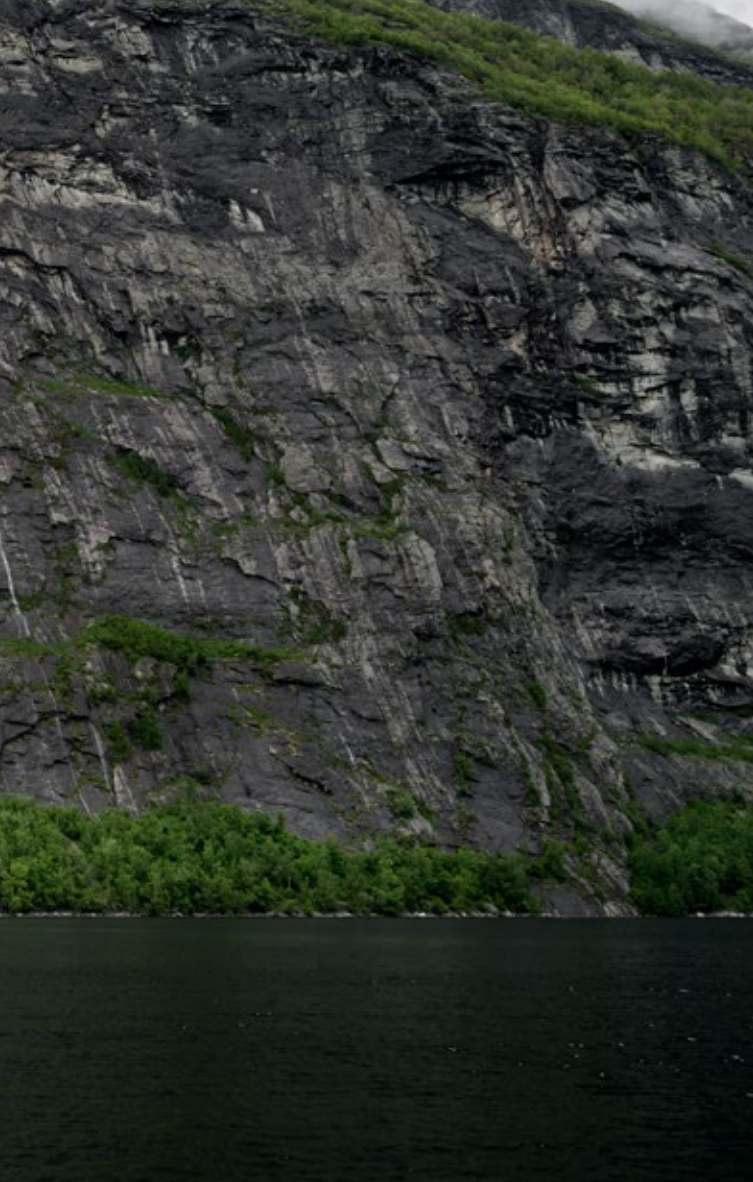
## **HEAT RECOVERY FROM UTILIZED WATER**

Surplus heat from cooling water and the energy system used by the ship is being recovered and utilized through the Ulmatec Pyro Waste Energy Management System. The system uses this lost energy for other applications on board, such as ship heating and hot water for your shower.

## **PREPARED FOR HYDROGEN**

Havila Voyages' ships have been designed to ensure that when hydrogen becomes a viable power approved for commercial sailing, the vessels can





be converted into using the latest technology. The vessels are part of a pilot scheme by Hav Design called "FreeCo2ast".

### QUALITY EXCURSIONS WITH A SMALLER FOOTPRINT

Havila Voyages is determined to minimise its impact on the local coastal communities and work with like-minded partners. We encourage our partners to drive investment in green solutions such as battery-powered buses, and we aim to set high standards that benefit passengers, communities, and the environment.

### SUSTAINABLE LIVING ON BOARD

The quality of life is all about putting love into the details, being close to nature and to each other. At Havila Voyages we aim to take our guests out of their daily lives and restore their essential connection to the natural world.

We like to show consideration of our environment in everything we do, including how we run our hotels and restaurants on board the ships. That is why you will not find a lot of disposable products such as plastic or paper on board. Instead, our guests are encouraged to refill their own water bottles with clean drinking water from one of our water dispensers, and to seek out practical information online or at one of the many information screens around the ship. And of course, one of our helpful staff will always be available to answer your questions.

Our menus have been carefully selected to reflect Norway's heritage and culinary traditions using high quality food from Norwegian and local producers, prepared by first-class chefs. In consideration of the environment, we take pride in minimizing food waste on board. In 2022 we comfortably minimized the average amount of food waste per passenger to 71 grams per day.

Since our waiters serve every meal directly to your table from our diverse a la carte menus, we not only meet our sustainability goals but also reduce unnecessary crowding in the restaurant. Annually, this approach trims food waste by up to 60 tonnes across our four ships when compared to buffet-style dining.

### THE ECO-VOYAGER CHECKLIST

As a guest aboard Havila Voyages, you make a positive impact on the environment. A few mindful actions on board can greatly contribute to the ship's overall sustainability.

- ✓ Cabin cleaned every other day unless required more frequently.
- ✓ Reuse your towels.
- ✓ Try to save water when showering or brushing teeth.
- ✓ Turn off lights you don't need
- ✓ Please sort trash in the ship's special bins. For other trash, use the bin in your room.
- ✓ Engage with local cultures; join our onboard educational programme.
- ✓ Choose sustainable excursions.
- ✓ Check the information screens rather than relying on printed material.
- ✓ Feel free to drink water from our dispensers.
- ✓ In restaurants, order only what you'll eat to reduce waste.


# WILD EXCURSION

## QUIET TRAVEL

Away from the comfort of the ship, you have the freedom to enjoy experiences tailored to your tastes and abilities. We invite you to join us on daily trips. With around 70 excursions available, you can always find one to suit the season.

Discover Norwegian islands, fjords, and Arctic landscapes up close; savour traditional Norwegian cuisine and delve into the nation's culture and history.

Journey through the highlights of the Norwegian coast with Havila Voyages' excursion programme. Glide across the plains on dog or reindeer sledges. Observe majestic sea eagles and witness the Saltstraumen, the world's most powerful tidal current. Admire the medieval design of the Nidaros Cathedral, or partake in a traditional feast at the Viking chieftain's longhouse. Feeling adventurous? Sample local delicacies, including king crab you've caught yourself, and consider visiting the Russian border, the World Heritage-listed Vega Islands, and the renowned North Cape Plateau.

 Read more about our excursions here: [havilavoyages.com](https://havilavoyages.com)





# ACTIVITIES ON BOARD

On board, you can learn about Norwegian history, culture, and cuisine. There's also some Nordic fun as we cross the Arctic Circle.

Sailing through picturesque coastal areas with ever-changing landscapes offers a tranquil feeling. When we approach noteworthy sites, we'll let you know and inform you about the upcoming views. Enjoy the scenery from the expansive floor-to-ceiling windows or, if you prefer, from an outdoor deck.

While the onboard atmosphere is laid-back, there's often something happening: For instance, as we cross the Arctic Circle, join us for a light-hearted "baptism ceremony" on the deck, inspired by the Norse sea god "Njord." During our voyage, you can also savour traditional Norwegian dishes.

For those interested in Norwegian culture and history, we have a range of onboard lectures. These explore topics from Havila Voyages' history to the creation of the Norwegian fjords, local birdlife, Sami culture, tales of witches, and the mesmerizing Northern Lights.





## WHEN DOES THE POLAR NIGHT OCCUR?

The polar night occurs when there is complete darkness throughout both day and night. This phenomenon is exclusive to regions north of the Arctic Circle and takes place during the following dates:

NORTH CAPE	18 Nov–23 Jan
HAMMERFEST	20 Nov–21 Jan
VARDØ	21 Nov–20 Jan
TROMSØ	25 Nov–16 Jan
HARSTAD	30 Nov–11 Jan
SVOLVÆR	04 Dec–07 Jan
BODØ	15 Dec–28 Dec



## WHEN CAN I SEE THE MIDNIGHT SUN?

During the summer, the sky remains bright throughout the night. However, it's only north of the Arctic Circle that you can see the entire sun remain over the horizon. The most frequent occurrences of the midnight sun are observed in the farthest northern regions.

NORTH CAPE	13 May–31 July
HAMMERFEST	16 May–28 July
VARDØ	16 May–28 July
TROMSØ	20 May–25 July
HARSTAD	24 May–20 July
SVOLVÆR	28 May–17 July
BODØ	03 June–11 July



# NORTHERN LIGHTS PROMISE

Concerned that you may not get to see the spectacular Northern Lights during your voyage? Don't worry.

From 1 October to 31 March, we promise that you will see the Northern Lights on the Bergen-Kirkenes-Bergen round trip.

This means that if spectacular green light does not dance across the night sky during your Round Voyage in this period, you get a new six or seven-day voyage from Bergen to Kirkenes (Voyage North) or vice versa (Voyage South) completely free. The journey is with an inside cabin and includes all meals; breakfast, lunch and dinner. See website for Terms and Conditions.



## CHOOSE YOUR PRICE

Select the price and flexibility that suits you best, from our three options.

### SAVER

#### LOWEST AVAILABLE FARE

- ✓ 100% to be paid at the time of booking
- ✓ Non-changeable
- ✓ Non-refundable

### FLEX

#### GREAT VALUE WITH FLEXIBILITY

- ✓ 20% to be paid at the time of booking
- ✓ Deposit refundable for 14 days after booking
- ✓ Final Balance 42 days prior to departure
- ✓ Changeable until 42 days prior to departure
- ✓ Departure date changeable until 15 days prior to departure\*
- ✓ Guest and cabin changes until 2 days prior to departure with an admin fee of NOK 500 per person\*

\* Price increases will be applied

# THE WORLD'S MOST BEAUTIFUL COASTAL VOYAGE

## THE NORTHBOUND ROUTE

DAY	PORT	ARRIVAL	DEPARTURE		
1	Bergen	14:45	20:30		
2	Florø	02:45	03:00		
	Måløy	05:15	05:30		
	Torvik	08:20	08:30		
	Ålesund	09:45	20:00		
	PORT	01/06-31/08	01/09-31/10		
		ARR.	DEP.	ARR.	DEP.
	Ålesund	09:45	10:00	09:45	10:00
	Geiranger	14:25	14:45		
	Hjørundfjord			12:15	15:45
	Ålesund	19:00	20:00	18:00	20:00
	Molde	22:35	23:05		
3	Kristiansund	02:45	03:00		
	Trondheim	09:45	12:45		
	Rørvik	21:40	22:00		
4	Brønnøysund	01:35	01:45		
	Sandnessjøen	04:35	04:50		
	Nesna	06:00	06:10		
	Ørnes	10:00	10:10		
	Bodø	13:05	15:20		
	Stamsund	19:15	19:40		
	Svolvær	21:20	22:15		
5	Stokmarknes	01:30	01:40		
	Sortland	02:55	03:10		
	Risøyhamn	04:35	04:50		
	Harstad	07:10	07:45		
	Finnsnes	11:00	11:30		
	Tromsø	14:15	18:15		
	Skjervøy	22:10	22:25		
6	Øksfjord	01:50	02:00		
	Hammerfest	05:05	05:45		
	Havøysund	08:30	08:45		
	Honningsvåg	10:55	14:30		
	Kjøllefjord	16:40	17:00		
	Mehamn	18:55	19:15		
	Berlevåg	22:00	22:10		
7	Båtsfjord	00:00	00:30		
	Vardø	03:30	03:45		
	Vadsø	06:55	07:15		
	Kirkenes	09:00	12:30		

## THE SOUTHBOUND ROUTE

DAY	PORT	ARRIVAL	DEPARTURE
7	Kirkenes	09:00	12:30
	Vardø	16:05	17:00
	Båtsfjord	20:00	20:30
	Berlevåg	22:25	22:35
8	Mehamn	01:20	01:30
	Kjøllefjord	03:25	03:35
	Honningsvåg	05:45	06:00
	Havøysund	08:00	08:15
	Hammerfest	11:00	12:45
	Øksfjord	15:50	16:05
	Skjervøy	19:30	19:45
	Tromsø	23:45	01:30
9	Finnsnes	04:20	04:40
	Harstad	08:00	08:30
	Risøyhamn	10:45	11:00
	Sortland	12:30	13:00
	Stokmarknes	14:15	15:15
	Svolvær	18:30	20:30
	Stamsund	22:15	22:30
10	Bodø	02:30	03:30
	Ørnes	06:25	06:35
	Nesna	10:25	10:35
	Sandnessjøen	11:45	12:15
	Brønnøysund	15:00	17:25
	Rørvik	21:00	21:30
11	Trondheim	06:30	09:30
	Kristiansund	16:30	17:30
	Molde	21:15	21:45
12	Ålesund	00:30	01:20
	Torvik	02:35	02:45
	Måløy	05:45	06:00
	Florø	08:15	08:30
	Bergen	14:45	20:30

Changes can be made to the timetable.