



EMERALD
CRUISES

Indian Ocean

DECEMBER 2024 – MARCH 2026



LUXURY YACHT CRUISING

A wealth of generous inclusions...

Airport transfers | All on board meals | Complimentary all day drinks | Wi-Fi on board | Included excursions | All port charges | All gratuities

Your Luxury Yacht

Aqua Pool & Café

At the aft of the yacht on the Pool Deck, take a leisurely dip in between light refreshments, with expansive views of the unfolding panoramas.



La Cucina Terrace

Situated at the back of La Cucina Dining, our large outdoor terrace is the perfect spot for unwinding with company.



Marina Platform & Toys

With opportunities for swim stops available during your cruise, getting in and out of the water couldn't be easier. Enjoy our marina toys, including snorkelling equipment, paddleboards, Kayaks, and even a trampoline.



La Cucina Dining

Fine dining from an à la carte menu, as well as a breakfast and lunch buffet, in a stylish setting, with tables designed for couples and groups.



^Available at additional cost.



The Sky Bar

Head to the Sky Bar on the Sky Deck to relax in the Spa Pool as you enjoy the glorious Mediterranean sun, delicious drink in hand.



Observation Deck

Take a prime position as we sail in and out of beautiful ports. Bring your camera, as wonderful views are all around.



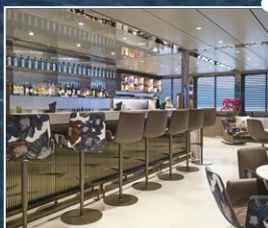
Elements Spa

Enjoy a spa treatment[^], book a hair appointment[^], relax in the sauna or keep fit in our well-equipped gym.



Observation Lounge

Enjoy unrivalled ocean views in comfort, looking out for marine life and approaching land. Or, simply rest and relax.



Amici Bar & Lounge

Meet new-found friends for great conversation in stylish surrounds, as our bar staff serve you your favourite drinks.

Safari & the Seychelles



EARLYBIRD
OFFER
Save up to
10%

16-Day Safari & the Seychelles

Nairobi to Mahé, Seychelles

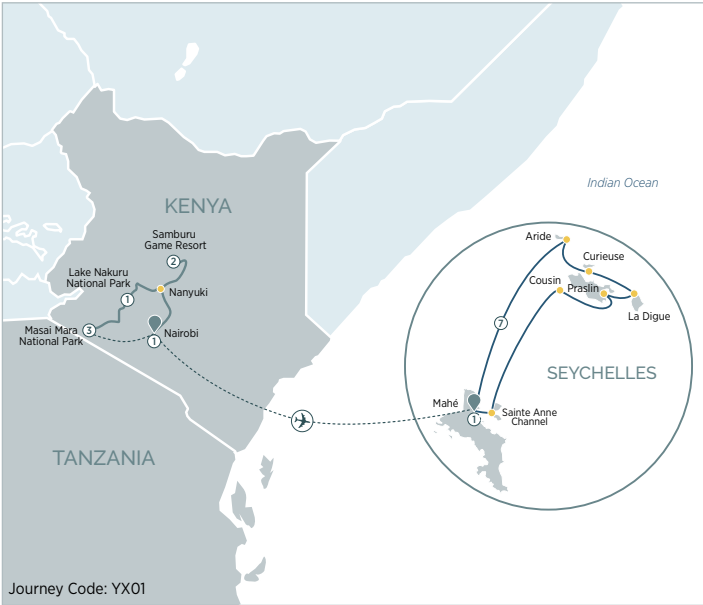
Departing: December 2024 - February 2025



Giraffe, Masai Mara National Reserve, Kenya



Samburu tribe, Kenya



15 Number of nights — Cruise — Cruise start/finish — Land Included flight

Day 1 Nairobi

JAMBO –Welcome to Kenya. Upon arrival at the Jomo Kenyatta International Airport, you will be met and transferred to your hotel in Nairobi, Kenya's colourful capital city. Enjoy dinner at the hotel this evening.

Overnight Stay: Sarova Stanley Hotel

Day 2 Nairobi - Samburu Game Reserve

Your African safari begins this morning as we head north via Nanyuki for the Samburu Game Reserve set in the rugged, semi-arid northern region of Kenya, with spectacular scenic landscape.

Your first safari drive is this afternoon. Samburu is visited by large herds of Elephants, drawn by the promise of water. It is one of the best places to find several endemic Northern species, including the reticulated giraffe, the Somali ostrich and Gravy's Zebra. The Samburu culture is a truly fascinating one, sharing a great deal of ancestral and linguistic ties to the Maasai.

Two-night Stay: Sarova Shaba Game Lodge

Day 3 Samburu Game Reserve

Enjoy morning and afternoon game viewing drive. The entire Samburu region is a place of breath-taking and magical beauty, a place where the vision of a deep red sunset silhouetting the doum palms along the river brings the perfect end to a day on safari.

Day 4 Samburu Game Reserve - Lake Nakuru National Park

After breakfast depart for Lake Nakuru National Park with a brief stop at the Thompson's fall for a breath-taking view of the great scenery.

The park is one of the best game viewing parks with various animal species including prides of lion, Cape buffalo, waterbucks, warthogs, the endangered Rothschild giraffe, the black & white Rhino, the Burchell's zebra, impala, and the elusive leopard among many others. Over 300 bird species have been recorded here too. Lake Nakuru National Park is one of the best places to see the endangered black and white Rhino.

Enjoy an African sunset experience with drinks and canapes.

Overnight Stay: Sarova Lion Hill Lodge

Day 5 Lake Nakuru National Park - Masai Mara Game Reserve

Visit the Mission in Action Orphanage and hear the stories of how it was started by an Australian family. Continue to the Masai Mara National Reserve – Kenya's most renowned game reserve offering wonderful scenery and plenty of wildlife. Arrive at your tented camp for lunch and a little bit of leisure time before you depart on an exciting game viewing drive. The rolling plains and grasslands, stretching far into the horizons as far as the eye can see is home to the black-manned lion, the savannah elephant, the Cape buffalo, wildebeest, the elusive leopard, cheetah, the spotted & striped hyena, the rhino, Burchell's zebra, the Maasai giraffe among many others.

Three Night Stay: Sarova Mara Game Camp

Day 6 Masai Mara Game Reserve

Optional Hot Air Balloon Safari

Enjoy a full day in the Masai Mara with morning and afternoon game drives.

Visit a traditional Maasai Village and experience the culture of this world-famous community. The Maasai still live as they did for centuries -interact with these nomadic people and experience their way of life as you learn about their customs and traditions.

Dine under the stars tonight.

Day 7 Masai Mara Game Reserve

Another day of game drives with an opportunity to see more of the big five that Masai Mara is famous for. These include the lion, savannah (African) elephant, the Cape buffalo, the leopard and the black rhino.

Day 8 Masai Mara Game Reserve - Nairobi - Mahé Seychelles

Fly back to Nairobi this morning. This afternoon a visit to the Giraffe Centre followed by the Karen Blixen Museum. Enjoy an early dinner at the Carnivore Restaurant before transferring to the airport for your onward flight to the Seychelles.

Day 9 Mahé Island - Sainte Anne Channel

Your tropical cruise begins in Mahé island, where you'll be transferred to your Emerald Cruises luxury yacht and embark on your discovery of the Seychelles. In the afternoon, we sail to Sainte Anne Channel.

Day 10 Sainte Anne Channel - Cousin Island - Praslin Island

Sainte Anne Island is encircled by a Marine National Park, home to incredible marine life including more than 150 species of fish. Sainte Anne is now a significant nesting site for Hawksbill turtles.

Late morning, we sail to Cousin, a small island renowned as a haven for seabirds. The granitic islet was a private property until 1968 when it was purchased by the International Council for Bird Preservation to transform it into a nature reserve. It's the most protected island in the archipelago, providing a breeding ground for eleven sea bird species annually and a habitat for five birds native to the Seychelles. We stay overnight in Praslin.

Day 11 Praslin Island

Praslin, the second largest island in the Seychelles, is visually stunning with tropical jungle-fringed beaches, emerald waters and powdery sand. Anse Lazio beach has been voted one of the world's best several times and there's a dazzling reef just offshore brimming with coral and marine life. On land, coconut palms and granite boulders create a picture-postcard landscape. In the centre of the island, discover the UNESCO World Heritage-listed Vallée de Mai Nature Reserve.

Day 12 Praslin Island - La Digue Island - Curieuse Island

Early in the morning, we sail to La Digue Island, the smallest of the three populated islands in the Seychelles. Like Praslin Island, it also possesses world-famous beaches, with one of the most recognisable being Anse Source d'Argent. It has pink-hued sands contrasting with granite boulders and aquamarine waters. We will navigate to Curieuse later in the evening.

Day 13 Curieuse Island

Curieuse is a rugged island swathed in unspoilt wilderness and home to hundreds of resident Aldabra giant tortoises. Apart from its obvious natural beauty, it has a fascinating history. It was once a quarantine station, and the original French colonial doctor's house has a museum and visitor's centre.

Day 14 Curieuse Island - Aride Island

Early in the morning, we sail to Aride, a nature reserve in the Indian Ocean. Nature enthusiasts and wildlife photographers flock to this island, where more than thirty rare bird species nest in the verdant vegetation. The landscape is enticing with fine-sand beaches, coconut palms and soaring cliffs.

Day 15 Mahé Island

Mahé is the main island of the scenic Seychelles and the largest of the archipelago. It's home to the capital Victoria, which was founded in the French settler period in 1778 and named later by the British, after Queen Victoria. The island of Mahé has pristine beaches dotted with huge rocks and tranquil nature trails threaded through the Morne Seychellois National Park.

Day 16 Mahé Island

Your Emerald Cruises voyage concludes in idyllic Mahé island. From the yacht, you will be transferred to the airport for your journey home or to continue your holiday.

Your EmeraldDiscovery highlights:

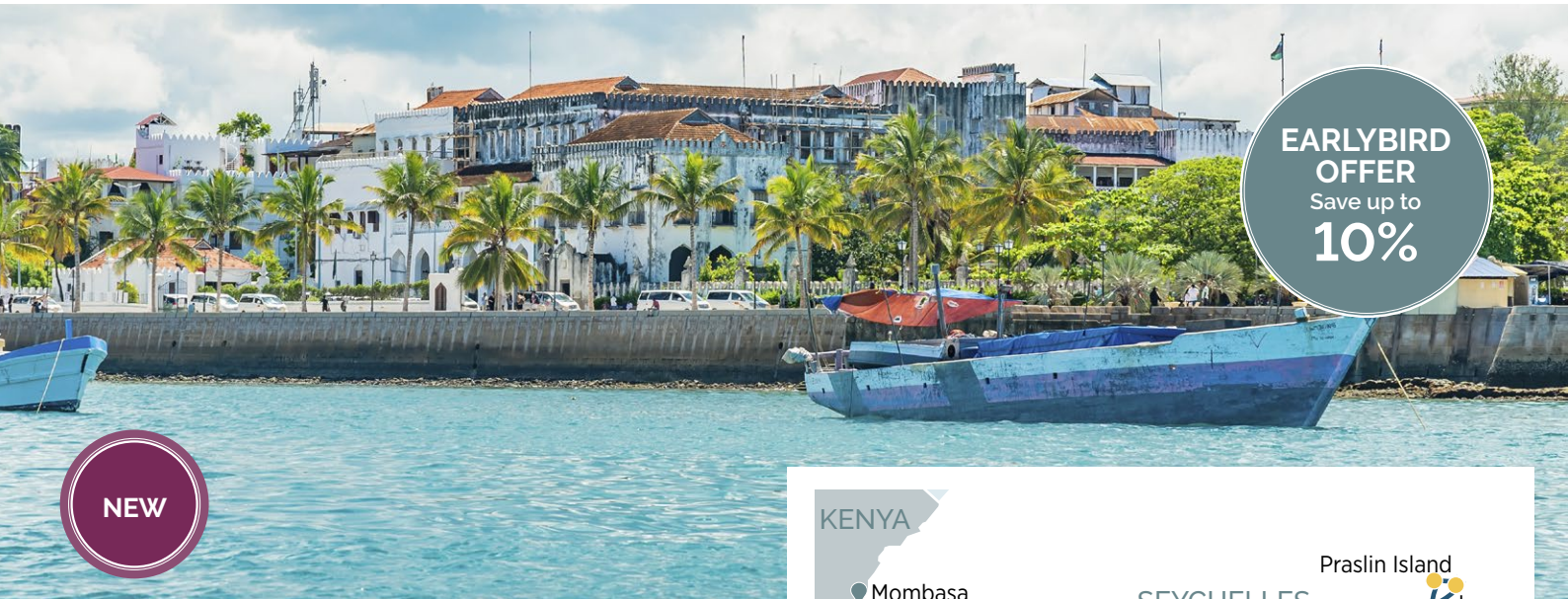
- Multiple opportunities to see the Big 5 (Lion, Elephant, Buffalo, Leopard, and Rhino)
- Three nights in the Masai Mara
- Visit a traditional Maasai Village
- Sundowner drinks at Lake Nakuru
- Discover the Out of Africa story at the Karen Blixen Museum.
- Explore eight islands with their suggestive Seychelles scenery.
- Praslin Island, stunning tropical jungle-fringed beaches, emerald waters and powdery sand compliment the Vallée de Mai, UNESCO World Heritage Site.
- Discover La Digue, known for its world-famous beaches such as Anse Source d'Argent, contrasting with granite boulders and aquamarine waters.
- Curieuse, a rugged island swathed in unspoiled wilderness, home to hundreds of resident Aldabra giant tortoises, mangroves and magnificent beaches.
- The breathtaking Aride nature reserve, gem of the nature of the Seychelles, inhabited only by the island rangers and an important breeding site for the seabird population of the Indian Ocean.

For more information scan the code



Oceanview from €10.120pp

Balcony Suite from €11.505pp



Stone Town, Zanzibar, Tanzania

13-Day Seychelles & Indian Ocean Adventure

Mombasa to Mahé, Seychelles

Departing: February 2025 & January 2026

We set sail from Mombasa and venture to the archipelago of Zanzibar. From there we island hop to the incredibly diverse Mafia Island, the UNESCO World Heritage-listed island of Kilwa Kisiwani then enjoy time at sea before exploring the Seychelles.

Day 1 Mombasa, Kenya	Day 8 Aldabra Atoll
Day 2 Zanzibar, Tanzania	Day 9 Aldabra Atoll
Day 3 Mafia Island	Day 10 Aldabra Atoll
Day 4 Kilwa Kisiwani Island	Day 11 Amirante Islands
Day 5 At sea	Day 12 Praslin Island – La Digue
Day 6 Aldabra Atoll, Seychelles	Day 13 Mahé Island
Day 7 Aldabra Atoll	



Praslin Island, Seychelles

Terms & Conditions: All prices are per person, subject to availability and based on a twin-share. Earlybird fares are limited in number and once sold out the full fare will apply. Itineraries and inclusions are subject to change. For full booking conditions visit emeraldcrises.eu

**EARLYBIRD
OFFER**
Save up to
10%



⑦ Number of nights — Cruise ♥ Cruise start/finish

Your EmeraldDiscovery highlights:

- Discover the Seychelles and several islands of Tanzania
- The Vallée de Mai nature reserve in Praslin, listed as a UNESCO World Heritage Site
- Explore preserved natural sanctuaries housing endemic species of birds
- Outings and shore visits with a discovery leader in the Seychelles atolls
- UNESCO World Heritage Sites: explore the ruins of Kilwa Kisiwani and Zanzibar's Stone Town
- Enjoy included Emerald**ACTIVE** & Emerald**PLUS** experiences
- Included excursion, dining & drinks, gratuities, and much more
- Plus, tailor your cruise with Discover**MORE** excursions (extra cost)

Oceanview Stateroom from **€8.740** per person

Balcony Suite from **€11.000** per person



For more information scan the code



La Digue Island, Seychelles

8-Day Tropical Charms of the Seychelles

Mahé, Seychelles to Mahé, Seychelles

Departing: December 2024 – February 2025
February 2026 – March 2026

Cruise between each beautiful island of this breathtaking archipelago in complete luxury. Stop off for relaxing beach breaks, picturesque walking trails and wildlife-spotting, as you enjoy the true taste of island life.

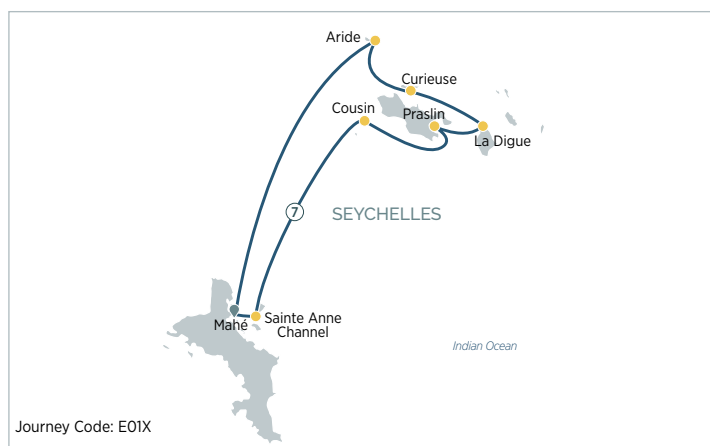
Day 1 Mahé Island – Sainte Anne Channel
Day 2 Sainte Anne Channel – Cousin Island – Praslin Island
Day 3 Praslin Island
Day 4 Praslin Island – La Digue Island – Curieuse Island

Day 5 Curieuse Island
Day 6 Curieuse Island – Aride Island
Day 7 Mahé Island
Day 8 Mahé Island



Discover the beauty of the Seychelles

Terms & Conditions: All prices are per person, subject to availability and based on a twin-share. Earlybird fares are limited in number and once sold out the full fare will apply. Itineraries and inclusions are subject to change. For full booking conditions visit emeraldcruiises.eu



⑦ Number of nights — Cruise ♥ Cruise start/finish

Your EmeraldDiscovery highlights:

- Explore eight islands with their spectacular Seychelles landscapes
- Praslin Island, stunning jungle-fringed beaches and emerald waters compliment the Vallée de Mai, UNESCO World Heritage Site
- Discover La Digue, known for world-famous beaches like Anse Source d'Argent, where granite boulders meet aquamarine waters
- Curieuse, a rugged island swathed in unspoiled wilderness, home to Aldabra giant tortoises, mangroves and magnificent beaches
- The breathtaking Aride nature reserve, inhabited only by island rangers and an important breeding site for Indian Ocean seabirds and sea turtles
- Enjoy included **EmeraldACTIVE** & **EmeraldPLUS** experiences
- Included excursion, dining & drinks, gratuities, and much more
- Plus, tailor your cruise with **DiscoverMORE** excursions (extra cost)

Oceanview Stateroom from €4.820 per person

Balcony Suite from €6.205 per person



For more information scan the code



Add Agent Name Here

0000 000 0000

Add Agent URL Here

